



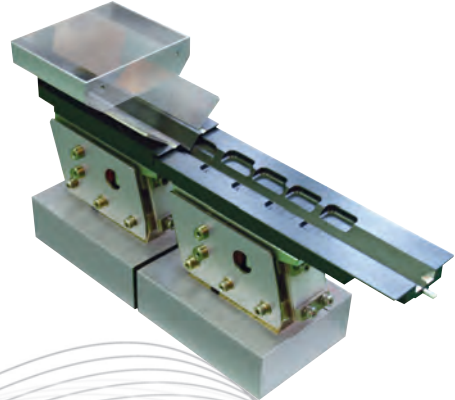
PROJECTS REFERENCE

JLF-55

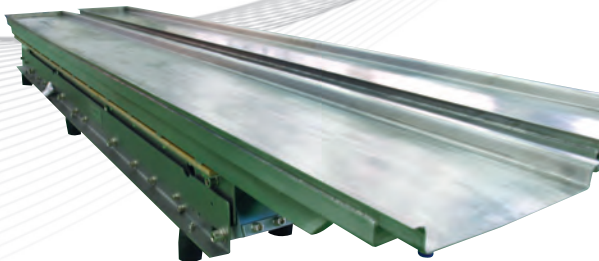


Small Linear Feeder

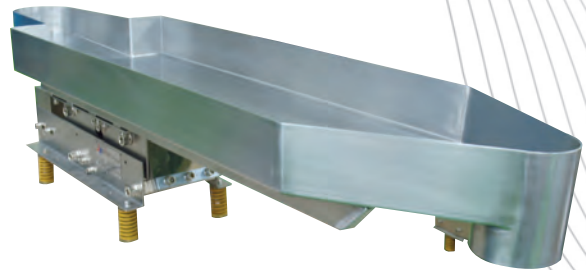
Discharging in a row the products passed to a hopper



Applying Water Cooling System for a Sterilizer

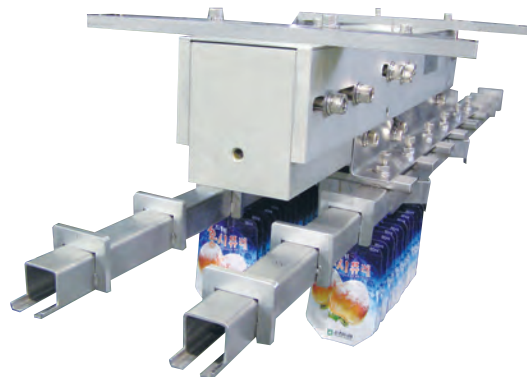


For Sterilizer



Pouch Feeding Transfer Device

It is possible to transfer 3~4 pouch containers per second.



Total Vibration System

**Hopper System
(Automobile plug)**



**Hopper for Refinement
(Dust treatment device)**



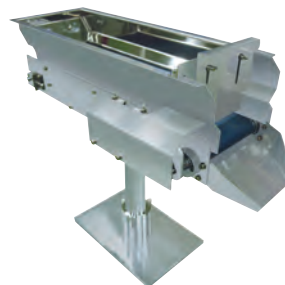
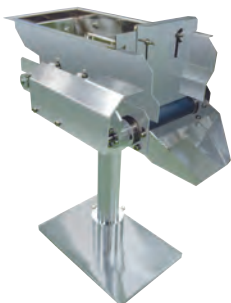
**Meat ball feeding
system (12 lanes)**



STEP CONVEYOR HOPPER

• Driven by air conveyor

• Manufacturing 4 sorts such as 300, 400, 500 and 600 depending on the hopper length



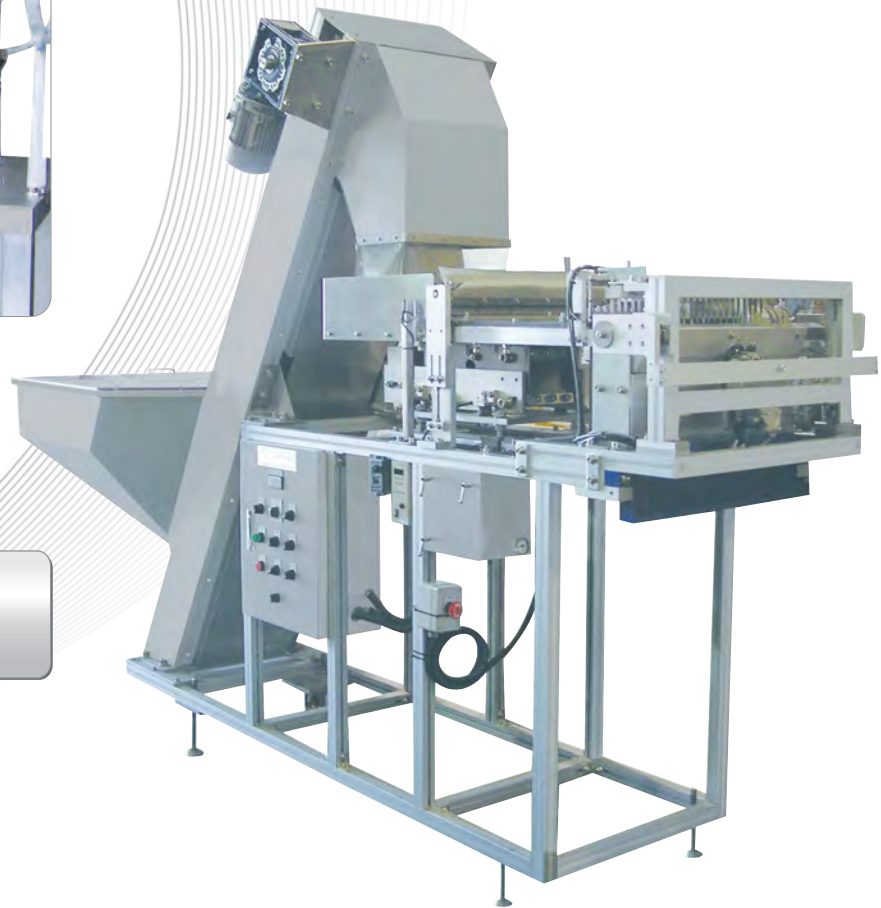


Ramen Soup Base Feeding System (Frame and safety fence)



Multi-Lanes Supply System

- Cosmetics sample containers
- Shampoo containers
- Blood collecting tube
- In case that other multi-lanes supply is required



Herb-Q feeding system (3 lanes and 3 holes system) For manual loading



Total Vibration System

BOWL FEEDER



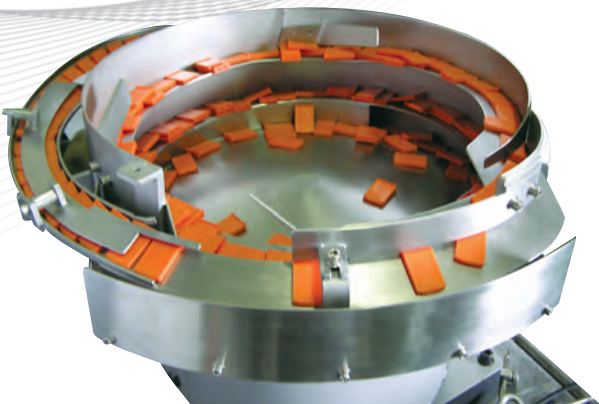
For Feeding Caps
(Manufacturing both $\varnothing 30$ and $\varnothing 100$)



Supply capability:
250ea/min is available, based on $\varnothing 40$



**For Supplying Plastic
Molding Products**



For Feeding Containers





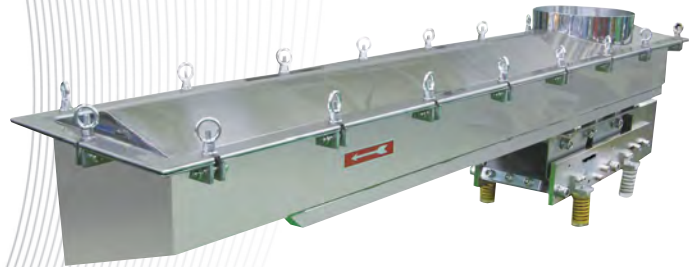
Injections, Aluminum Caps and Rubber Caps

- Feeding capacity of more than 350 ea/min
- Using SUS 316 material of CMP standard



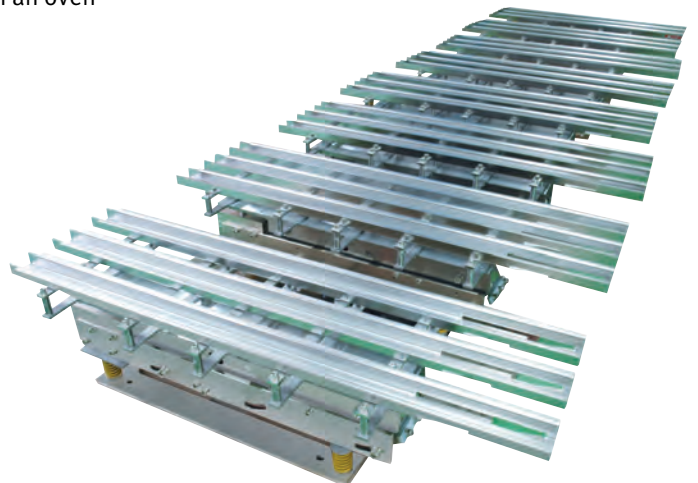
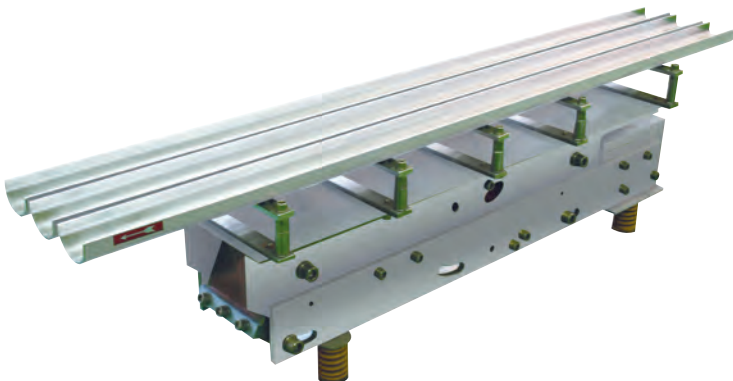
For Protection of Dust Scattering (Cover type)

- Clamp styles are eyebolt, hook clamp and etc.
- Installing a monitoring window
- Customized shape manufacturing of inlets and outlets



For Cracker Transfer

- Manufacturing 3 lanes ~ 6 lanes
- Manufacturing 1,000mm~2,000mm
- Supplying and transferring upright products discharged from an oven
- It is possible to discharge disarranged fragments
- Minimizing the damage of crackers owing to low vibration



Total Vibration System

Pouch Parts Array Device (200~250ea/min)

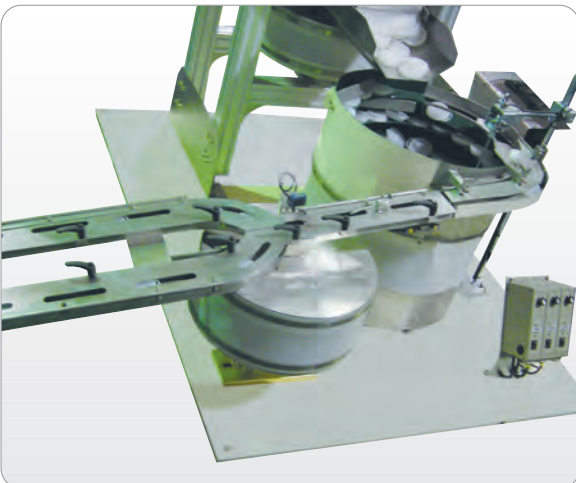


Manual Loading Bowl Feeder

- For manual loading of materials that require lots of processing time
- 300 ea ~ 500 ea loading is available (Specifications on demand)
- Heavy products and products of complicated shape are available



Vibration-Proof Feeder (Thinner, paint and agricultural pesticides)



Mass-Production of Aluminum Bowl

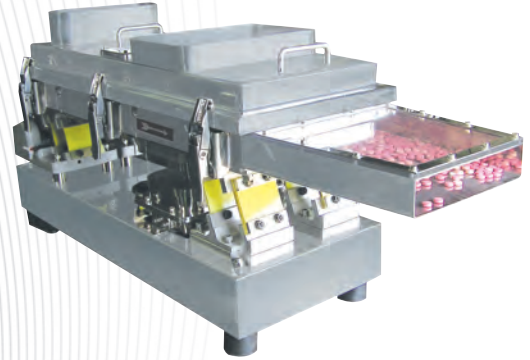




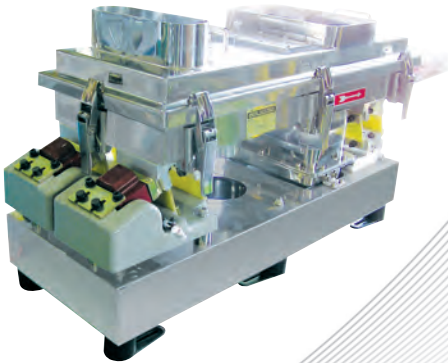
Size Separation System



Size Separator (Blower System)



Size Separator (Blower System)



Size separator (3 steps)



**Choco Ball Supply Device
(Multi-lanes supply system)
(30 lanes × 2 sets)**

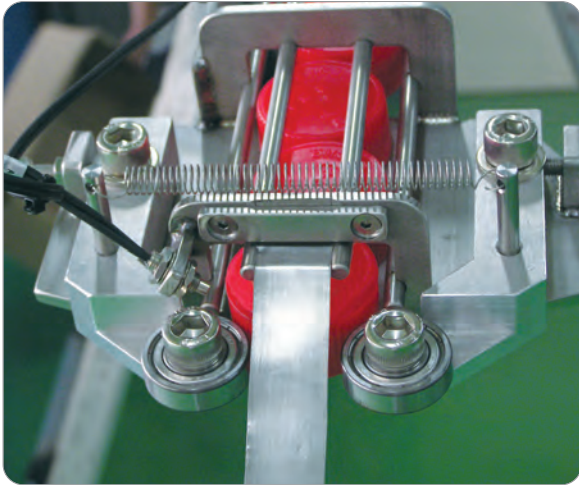


**Choco Ball Supply Device
(Multi-lanes supply system)
(30 lanes × 2 sets)**



Total Vibration System

Automatic Cap Feeding Device



Conveyor Hopper Cap Feeding Device

- The function of up-down lifting depending filling containers (Jack screw)
- Drive: Selection of manual system or automatic system equipped with a motor



Feeding System (Cap feeding and sorting section)

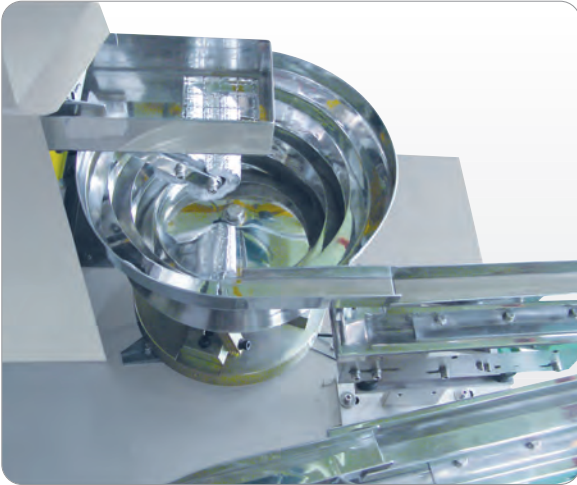


Conveyor Hopper Lift System

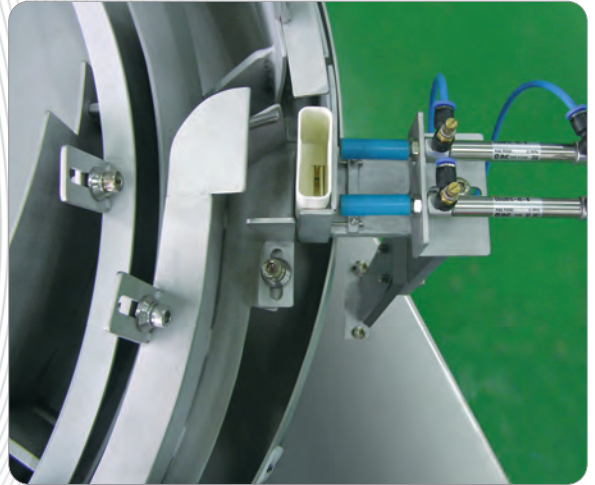




**Ramen Soup Base Feeding System
(Iron screening using magnet)**



Screening Applying Variant Container Sensors and Apparatus



Full Work Sensor System

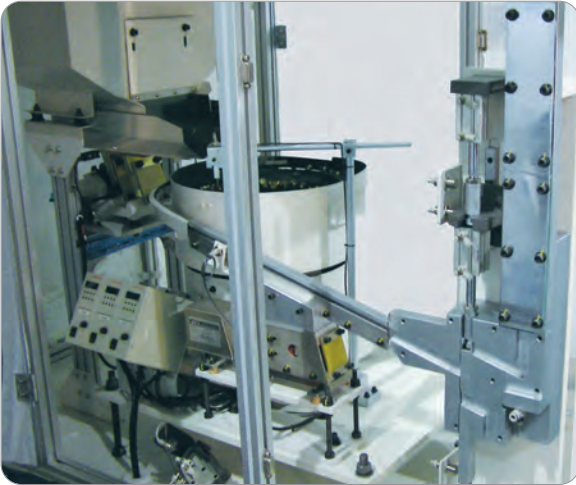


Bowl Feeder and Escapement Device

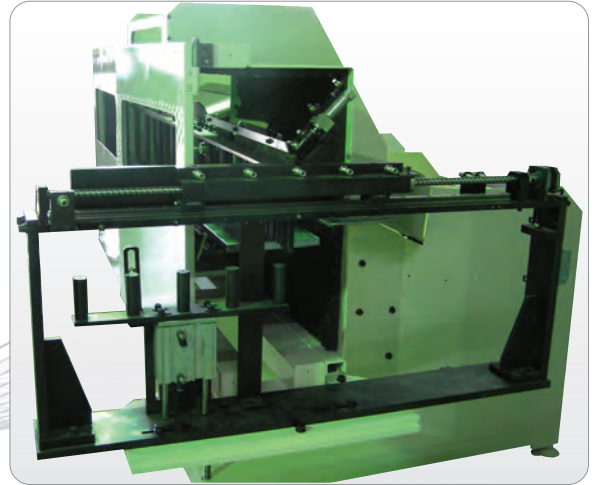


Total Vibration System

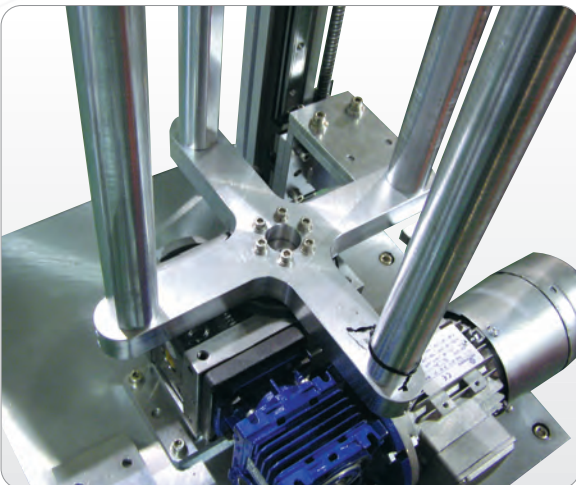
**Integration System (Automobile
plug air conveying device)**



**Step Feeder and
Distributor System (Bolts)**



**Index Loading System (Appearance
damage concerned products such as gears)**



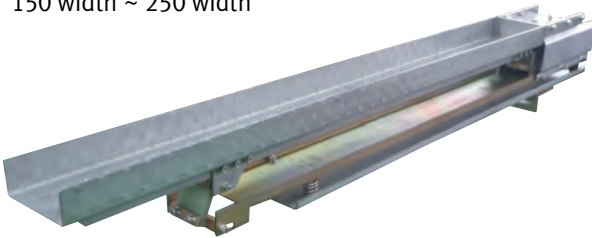
2 Axis Drilling Machine





For discharging press scraps and products

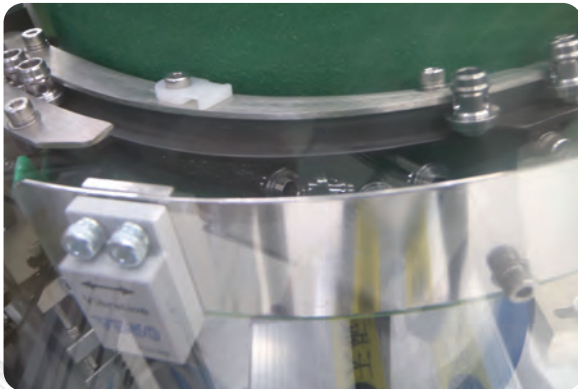
Available to replace discharge chute of 150 width ~ 250 width



Hopper and Chute can be Detached Easily with Hook Clamp



Application Example of Constant Amplitude Sensor



Sound-Proofing Cover (Choosing PC 8T hinged door and sliding door)



Feeder for the Treatment of the Vacuum Inside the Bowl



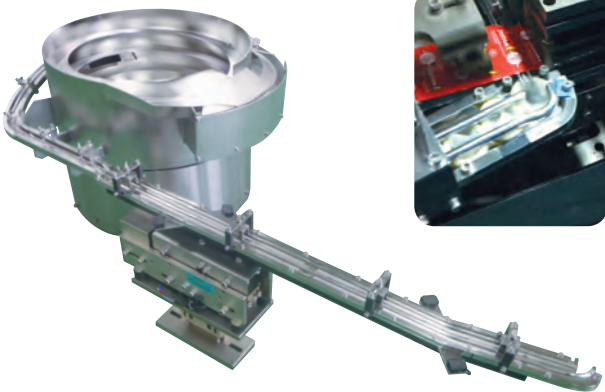
For Bush Bearing Beveling Machine Applying a Pocket Hopper



Total Vibration System

CONDOM FEEDING SYSTEM (1 lane, 3 lanes, 4 lanes)

1 Lane System



1 Lane System

- Available to install removing only the existing feeding section of the existing manual machine
- Stable feeding capacity of 180 ea/min or more
- Dust is not generated and air is not consumed since only supplying to bowl feeder and linear feeder without supplying additional air
- Displaying the same performance regardless of 50Hz and 60Hz due to applying the frequency control.

3 Lanes System



3 Lanes System

- Manufacturing 1 unit with bowl of $\varnothing 800$
- Stable feeding of more than 100ea/min per lane
- Realizing fast entrance with jigs by high speed transfer due to low vibration type linear feeder
- Applying the frequency control

4 Lanes System



4 Lanes System

- 2 bowl feeders are symmetrically fabricated by 2 lanes
- Stable feeding of more than 100ea/min per lane
- Realizing the low vibration and high speed transfer by applying JLF-65 to a linear feeder
- Applying the frequency control